

Kowsar

Danesh Salamat Kowsar Co.
شرکت موقوفه دانش سلامت کوثر





Table Of Content

- **ORTHOPEDIC**
- **SPORTS MEDICINE**
- **INSTRUMENT**

Kowsar

Danesh Salamat Kowsar Co.
شرکت موقوفه دانش سلامت کوثر

Spine Catalog 2023

CONTACTS

web: www.kowsarmedical.com
mail: info@kowsarmedicla.com
mail: kowsarmedical@gmail.com

Inauguration of one of the largest companies producing neurosurgery, spine, sport medicine and dental implants in Iran and the Middle East

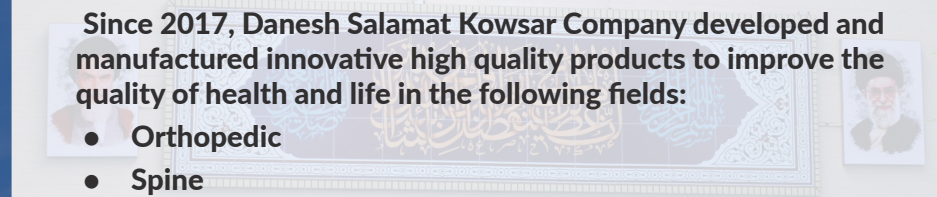
Branch 1: Corner Of Maharat St., After The Sixth Sq., Shiraz Industrial Town, SHIRAZ, Iran
Branch 2: 308 St., North Pazhoresh St., Shiraz Industrial Town, SHIRAZ, Iran
Tehran branch: unit 10, floor 4, no 3, Farhad Alley, Niloufar St, North Sohrvardi , TEHRAN, Iran

ABOUT US



Since 2017, Danesh Salamat Kowsar Company developed and manufactured innovative high quality products to improve the quality of health and life in the following fields:

- Orthopedic
- Spine
- Craniomaxillofacial
- Sports medicine
- Dental implants
- Biomaterial products.





STANDARDS PRODUCTION LICENSE CERTIFICATES





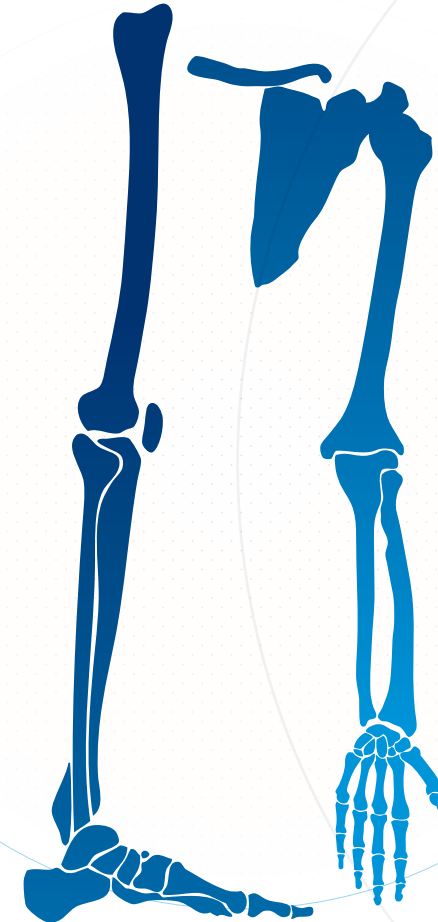
ORTHOPEDIC

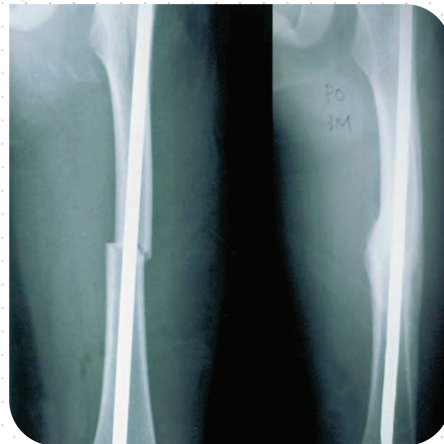
- Include Different Type of Nails, Staples, Endobuttons, Suture Anchors and Related Instruments

PRODUCT

- Rush Nail
- Elastic Nail
- Humeral Interlocking Nail
- Proximal Femoral Nail Anti-Rotation (PFNA)
- PFNA Blade Ø10
- PFNA End Cap
- Expert Tibial Interlocking Nail
- Femoral Interlocking Nail
- Expert Femoral Interlocking Nail
- Interlocking Bolt Screw
- Osteotomy Staple Fixation Device - Stepped
- Osteotomy Staple Fixation Device - Spiked
- Osteotomy Staple Fixation Device

kowsarmedical.com

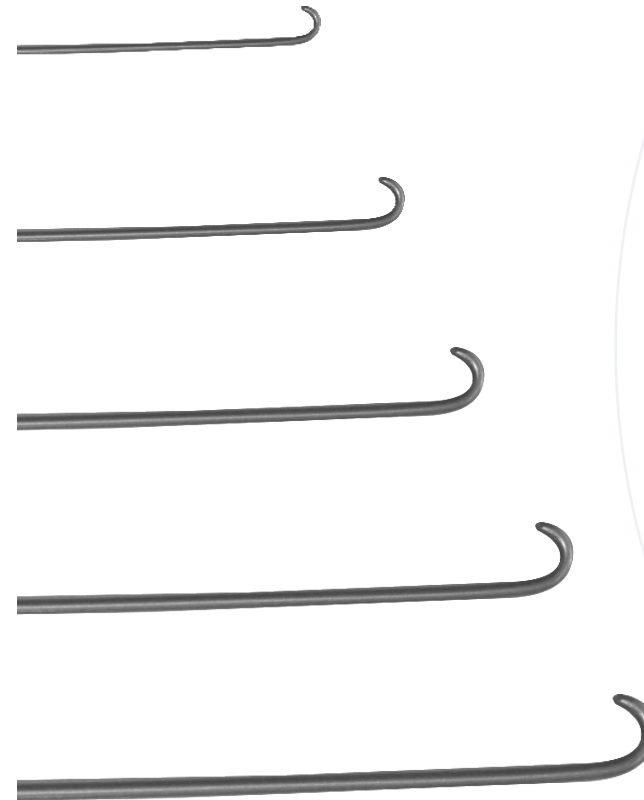




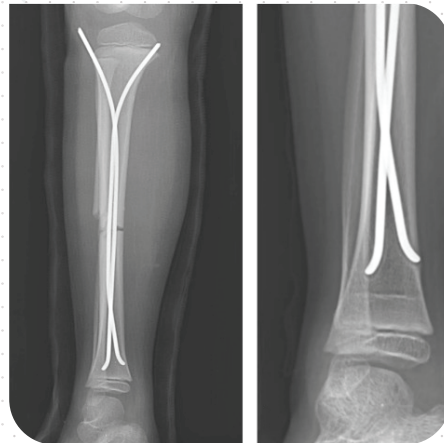
RUSH NAIL

- Use For Diaphyseal or Metaphyseal Fractures of Long Bones
- Easy Insertion
- The Curve at The Top Prevents Rotation and Stabilizes the Fracture
- Made from Stainless Steel

Ti
Material



Description	Product Code
3.5*200	100335
3.5*250	100336
3.5*300	100337
3.5*350	100338
4*200	100339
4*250	100340
4*300	100341
4*350	100342
4.5*200	100343
4.5*250	100344
4.5*300	100345
4.5*350	100346
5*200	100347
5*250	100348
5*280	100133
5*300	100349
5*350	100350
5.5*200	100351
5.5*250	100352
5.5*300	100353
5.5*350	100354



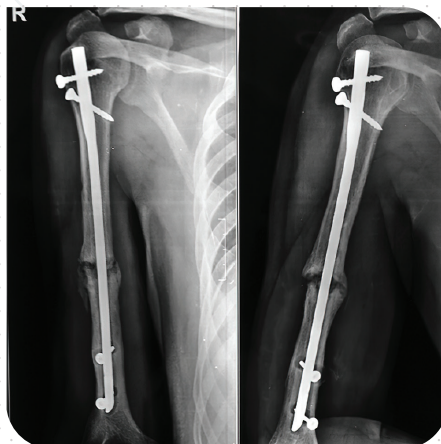
ELASTIC NAIL

- Use For Diaphyseal or Metaphyseal Fractures in Children
- The Curve at The Top Prevents Rotation and Stabilizes the Fracture
- No Need to Open the Fracture Site
- Made from Stainless Steel

Ti
Material



Description	Product Code
2*440	991128
2.5*440	991129
3*440	991130
3.5*440	991131
4*440	32676



Ti
Material

HUMERAL INTERLOCKING NAIL

- Use For Humerus Shaft Fracture
- Can be used with Ø3.4 Interlocking Bolt Screws
- Inserted in the Bone and Captures the Nail Inside the Medullary Cavity Secured to it with Locking Bolts Going
- Prevent Postoperative Instability Through an Innovative Mechanical Interlock Between the Nail and the Bolts
- Immediate Weight-Bearing
- Made from Medical Grade Titanium



Description	Product Code
6.7*200	991119
6.7*210	100047
6.7*220	991120
6.7*230	100048
6.7*240	990916
6.7*250	100049
6.7*260	13120
6.7*270	100050
6.7*280	990917
6.7*290	73991
6.7*300	991121
7.5*200	991122
7.5*210	100052
7.5*220	991123
7.5*230	100053
7.5*240	990918
7.5*250	100054
7.5*260	990919
7.5*270	100055
7.5*280	990920
7.5*290	100056
7.5*300	991124



Ti
Material



PROXIMAL FEMORAL NAIL ANTI-ROTATION (PFNA)

- Available in 2 Models; Short and Long
- Use for the Treatment of Unstable Trochanteric Femoral Fractures, with the Additional Option of Augmentation; PFNA BLADE
- Can be used with Ø4.8 Interlocking Bolt Screws
- Made from Medical Grade Titanium

Short

Description	Product Code
10*200	21148
10*240	80044
11*200	13510
11*240	80035
12*200	21151
12*240	21147

Long / Left

Description	Product Code
10*320	91813
10*340	91857
10*360	91901
10*380	91945
11*340	80047
11*360	80050
11*380	80042
11*400	80049
11*420	80078
12*340	21140
12*360	21142
12*380	21144
12*400	21146

Long / Right

Description	Product Code
10*320	91791
10*340	91835
10*360	91879
10*380	91923
11*340	80048
11*360	80041
11*380	80043
11*400	80054
11*420	80079
12*340	21141
12*360	21143
12*380	21145
12*400	21139

PFNA Blade

Ti $\varnothing 10$
Material



Description	Product Code
70	13115
75	80034
80	73625
85	73626
90	73627
95	80036
100	80028
105	80039
110	80055
115	13117
120	13118

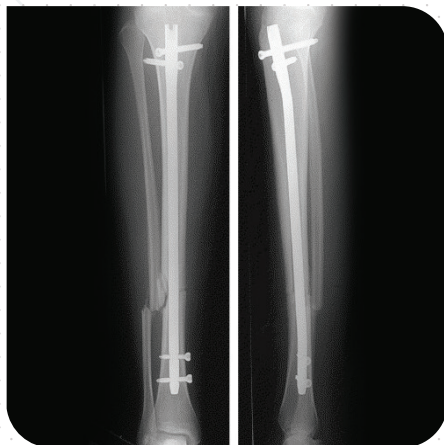
PFNA End Cap

Ti
Material



Product Code
73624





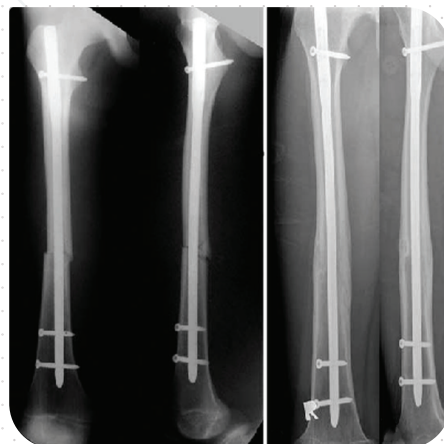
Ti
Material



EXPERT TIBIAL INTERLOCKING NAIL

- Use for the Fixation of Proximal, Shaft and Distal Fractures of the Tibia
- Antirotate
- Can be used with Ø4.3 Interlocking Bolt Screws
- It has Multi-directional Locking Options in the Distal and Proximal Parts of the Nail
- Made from Medical Grade Titanium

Description	Product Code
9*285	20001
9*300	20002
9*315	20003
9*330	20004
9*345	20005
9*360	20006
9*375	20007
10*285	20008
10*300	20009
10*315	20010
10*330	20011
10*345	20012
10*360	20013
10*375	20014
11*285	20015
11*300	20016
11*315	20017
11*330	20018
11*345	20019
11*360	20020
11*375	20021



Ti
Material



FEMORAL INTERLOCKING NAIL

- Use For Femoral Shaft Fracture
- A Single Nail Used for Both Right and Left Interlocking Procedures
- Can be used with Ø5 Interlocking Bolt Screws
- Inserted in the Bone and Captures the Nail Inside the Medullary Cavity Secured to it with Locking Bolts Going
- Prevent Postoperative Instability Through an Innovative Mechanical Interlock Between the Nail and the Bolts
- Immediate Weight-Bearing
- Made from Medical Grade Titanium

Description	Product Code	Description	Product Code
9*320	97200	12*320	97212
9*340	97201	12*340	92416
9*360	97202	12*360	92417
9*380	97203	12*380	74033
9*400	97204	12*400	74030
9*420	97205	12*420	94121
9*440	97206	12*440	74034
9*480	97207	12*480	97213
10*320	97208	13*340	94122
10*340	97223	13*360	94123
10*360	80058	13*380	74031
10*380	91128	13*400	74035
10*400	91130	13*420	94217
10*420	91133	13*440	74032
10*440	91135	13*480	97214
10*480	97209	14*340	97215
11*320	97210	14*360	97216
11*340	91136	14*380	97217
11*360	92166	14*400	97218
11*380	92167	14*420	91219
11*400	97237	14*420	97219
11*420	92201	14*440	97220
11*440	92415	14*480	97221
11*480	97211		



Ti
Material



EXPERT FEMORAL INTERLOCKING NAIL

- New Generation of Femoral Interlocking Nail
- Different Design for Right and Left Femure
- Use to Stabilize Subtrochanteric Femoral Fractures, Ipsilateral Neck/shaft Fractures and Femoral Shaft Fractures
- Can be used with Ø4.5 and Ø6.4 Interlocking Bolt Screws
- Made from Medical Grade Titanium

Left

Right

Description	Product Code	Description	Product Code
9*320	100159	9*320	100160
9*340	100161	9*340	100162
9*360	100163	9*360	100164
9*380	100165	9*380	100166
9*400	100167	9*400	100168
9*420	100169	9*420	100170
9*440	100171	9*440	100172
10*320	100173	10*320	100174
10*340	100175	10*340	100176
10*360	100177	10*360	100178
10*380	100179	10*380	100180
10*400	100181	10*400	100182
10*420	100183	10*420	100184
10*440	100185	10*440	100186
11*320	100187	11*320	100188
11*340	100189	11*340	10090
11*360	100191	11*360	100192
11*380	100193	11*380	100194
11*400	100195	11*400	100196
11*420	100197	11*420	100198
11*440	100199	11*440	100200
12*320	100201	12*320	100202
12*340	100203	12*340	100204
12*360	100205	12*360	100206
12*380	100207	12*380	100208
12*400	100209	12*400	100210
12*420	100211	12*420	100212
12*440	100213	12*440	100214
13*320	100215	13*320	100216
13*340	100217	13*340	100218
13*360	100219	13*360	100220
13*380	100221	13*380	100222
13*400	100223	13*400	100224
13*420	100225	13*420	100226
13*440	100227	13*440	100228

Interlocking Bolt Screw

Ti
Material



Description	Product Code	Description	Product Code
3.4*30	20445	5*20	32601
3.4*34	20442	5*22	32602
3.4*38	993048	5*24	32603
3.4*40	20443	5*25	97070
3.4*42	993049	5*26	32604
3.4*46	993051	5*28	32605
3.4*50	993053	5*30	97071
4.3*25	20022	5*30	32606
4.3*30	20023	5*32	32607
4.3*35	20024	5*34	32608
4.3*40	20025	5*35	97162
4.3*45	20026	5*36	32609
4.3*50	20027	5*38	32610
4.3*55	20028	5*40	32611
4.3*60	20029	5*40	140033
4.3*65	20030	5*42	32612
4.3*70	20031	5*44	32613
4.3*80	20032	5*45	97163
4.8*36	73623	5*46	32614
4.8*38	73619	5*48	32615
4.8*40	73628	5*50	32616
4.8*45	80035	5*50	140034
4.8*46	13511	5*52	32617
4.8*50	80040	5*54	32618
4.8*55	80045	5*55	140032
4.8*60	80046	5*56	32619
4.8*66	80060	5*58	32620
4.8*70	80059	5*60	97170
		5*60	32621
		5*65	32622
		5*65	140031
		5*70	97171
		5*70	32623
		5*75	97172
		5*75	32624
		5*80	97173
		5*80	32625
		5*85	97174
		5*85	32626
		5*90	32627
		5*95	97175

Interlocking Bolt Screw

Ti
Material



Description	Product Code
6.4*30	990921
6.4*35	990922
6.4*40	990923
6.4*45	990924
6.4*50	990925
6.4*55	990926
6.4*60	990927
6.4*65	990928
6.4*70	990929
6.4*75	990930
6.4*80	990931
6.4*85	990932
6.4*85	990933



STAPLE

- Used for Fragment Fixation, Specifically When Inter-Fragmental Screw Fixation Is Not Easy
- Available in Different Size for Varying Patient Anatomy
- Stepped Staples provide the most comprehensive approach to bone fixation following high tibial osteotomies
- Simple and spiked staples are designed to reduce the risk of the staple backing out of the bone and to reattaching tubular soft tissue to bone
- Made by Medical Grade Titanium

Osteotomy Staple Fixation Device Stepped

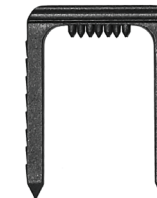
Ti
Material



Description	Product Code
23*21.5	80000

Osteotomy Staple Fixation Device Spiked

Ti
Material



Description	Product Code
19.5*25.5	100132

Osteotomy Staple Fixation Device

Ti
Material

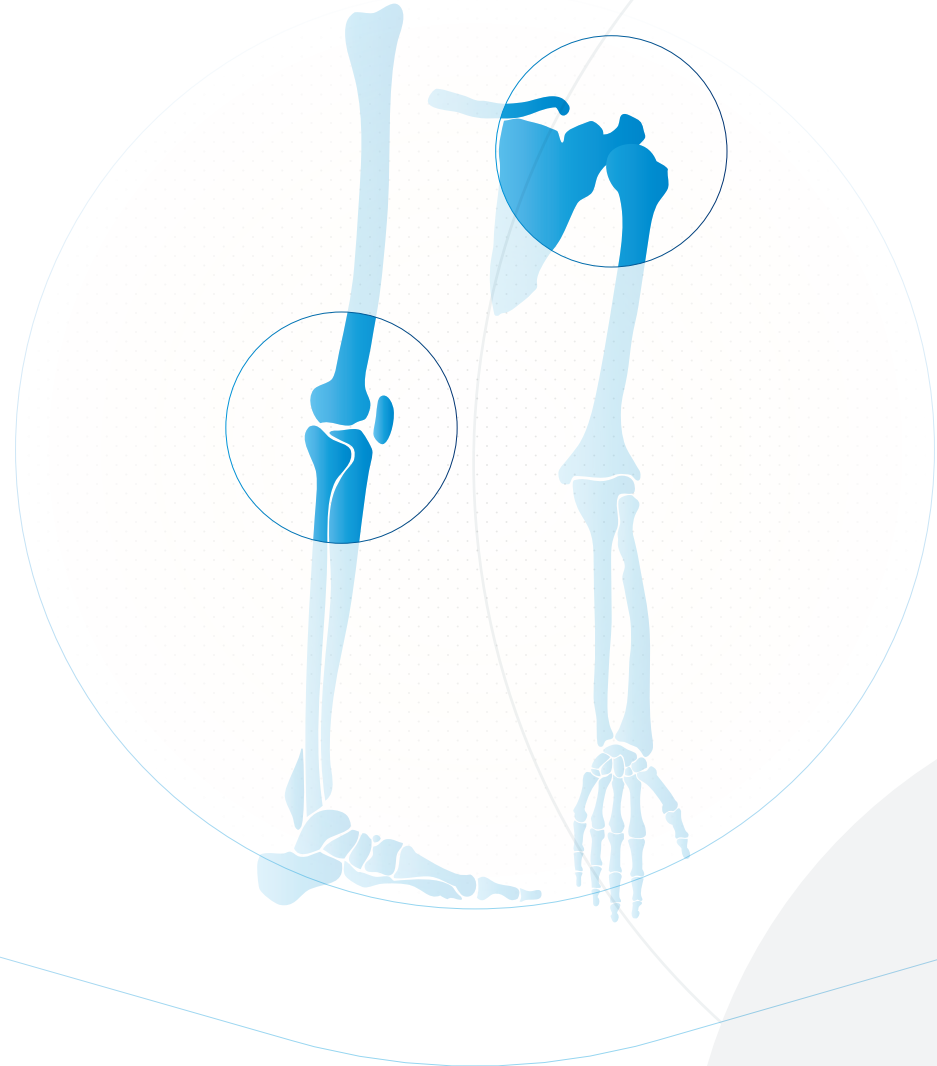


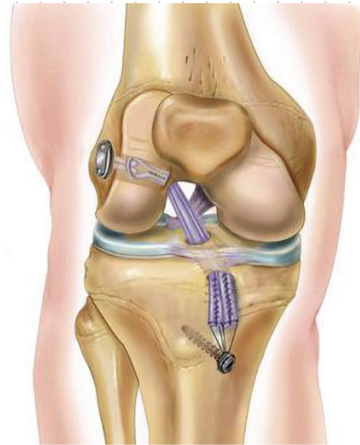
Description	Product Code
19.5*25.5	100134



SPORTS MEDICINE

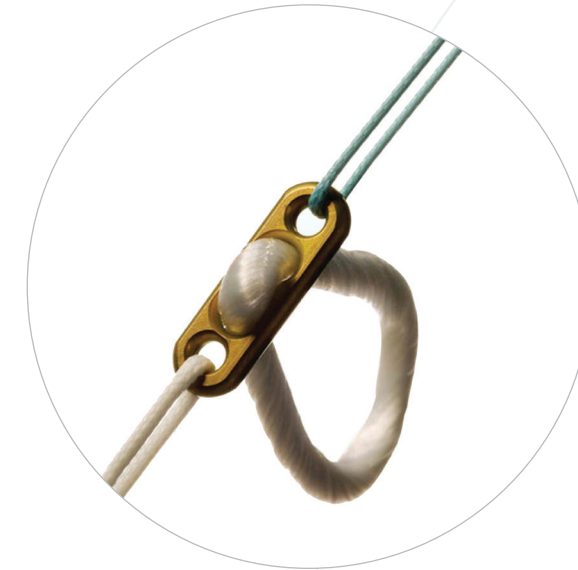
kowsarmedical.com



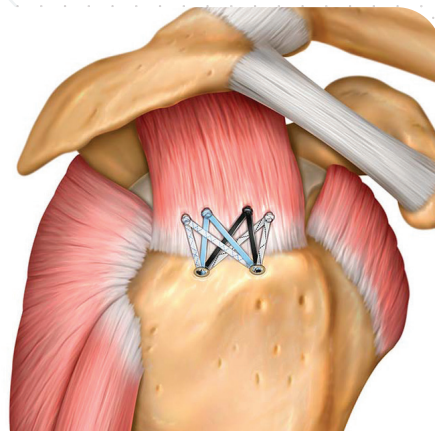


ENDOBUTTON

- Allows for Easy Passage of the Tendon Back to Its Anatomic Location
- Enables the Patient to Have Good Range of Motion and Active Flexion and Supination Soon After the Procedure
- Dependable Fixation for Bone-Tendon, Bone-ACL Reconstruction Procedures
- Available in Different Loop Size
- Includes Titanium Button and UHMWPE Thread
- Sterilized with EO

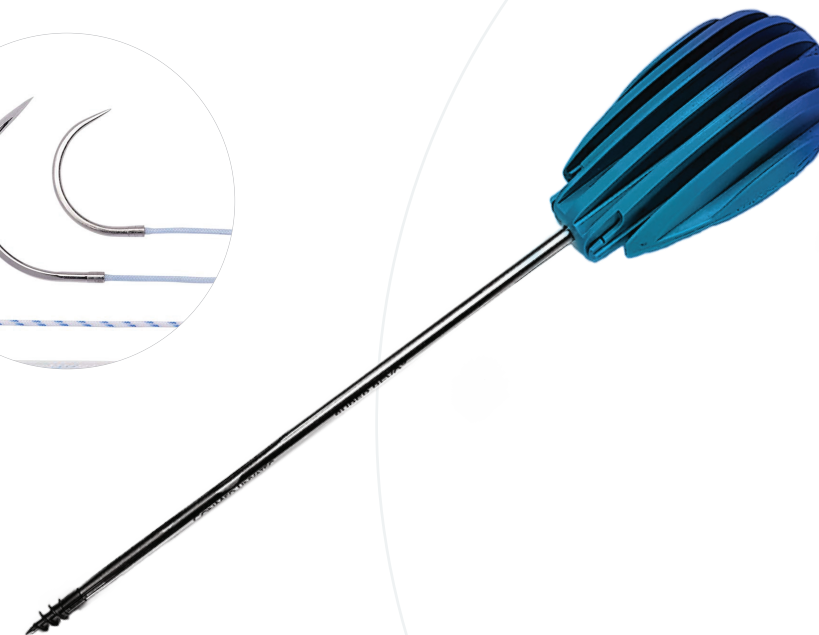
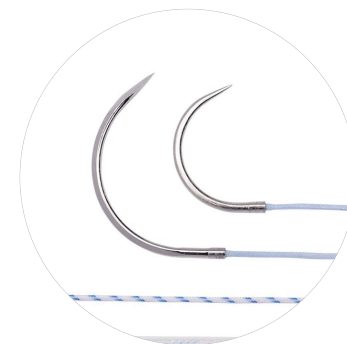


Description	Product Code
Loop 15 mm	99945
Loop 20 mm	99946
Loop 25 mm	99947
Loop 30 mm	99948
Loop 35 mm	99949
Loop 40 mm	99950



SUTURE ANCHOR

- Available in 2 Models; With and Without Niddle
- Used for Attaching Soft Tissue to the Bone and During Arthroscopic Surgery
- Includes Titanium Screw and USP Thread
- The metal threaded anchors can be inserted into bone in one step without predrilling
- All anchors are available with Fiber-Wire suture
- Sterilized with EO

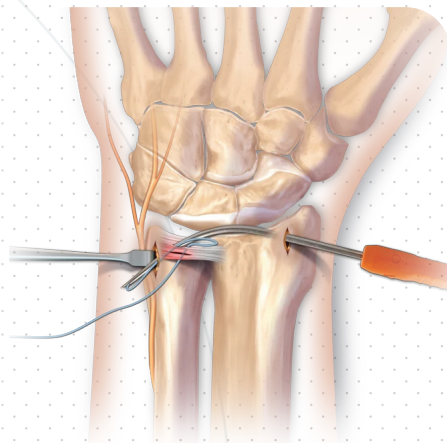


Suture Anchor With Needle

Description	Product Code
2.8	993182
5.5	100016

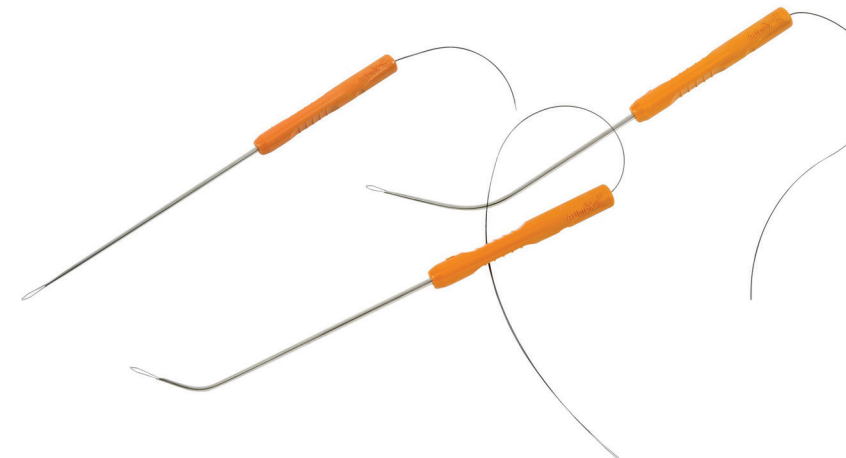
Suture Anchor

Description	Product Code
2.8	100356
5.5	100357



MICRO SUTURE LASSO

- Use for Arthroscopic Suture Passing in Upper and Lower Extremities
- Available in 3 Different Curves
- The ergonomic plastic handle facilitates accurate placement and control
- percutaneous suture passing during rotator cuff and glenoid labrum repairs
- Made from Steel Pipe and Nitinol Wire
- Sterilized with EO
- Disposable

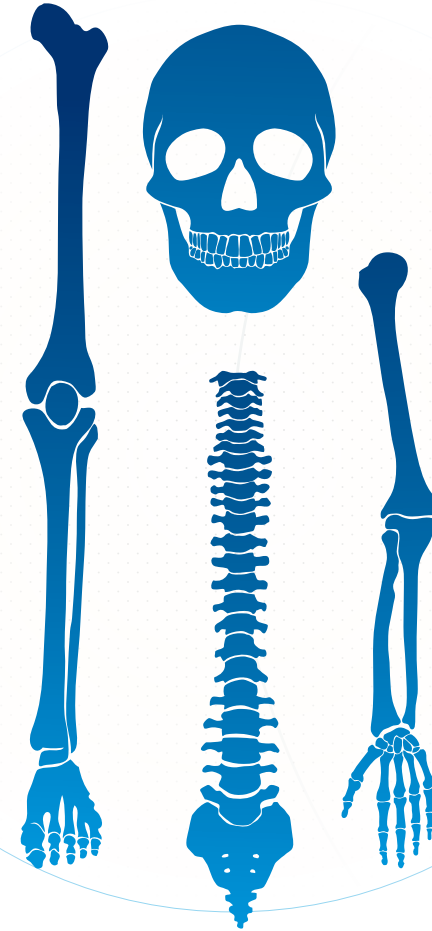


Description	Product Code
Micro suturelasso-STRAIGHT	991125
Micro suturelasso-MINOR bend	991126
Micro suturelasso-MAJOR bend	991127



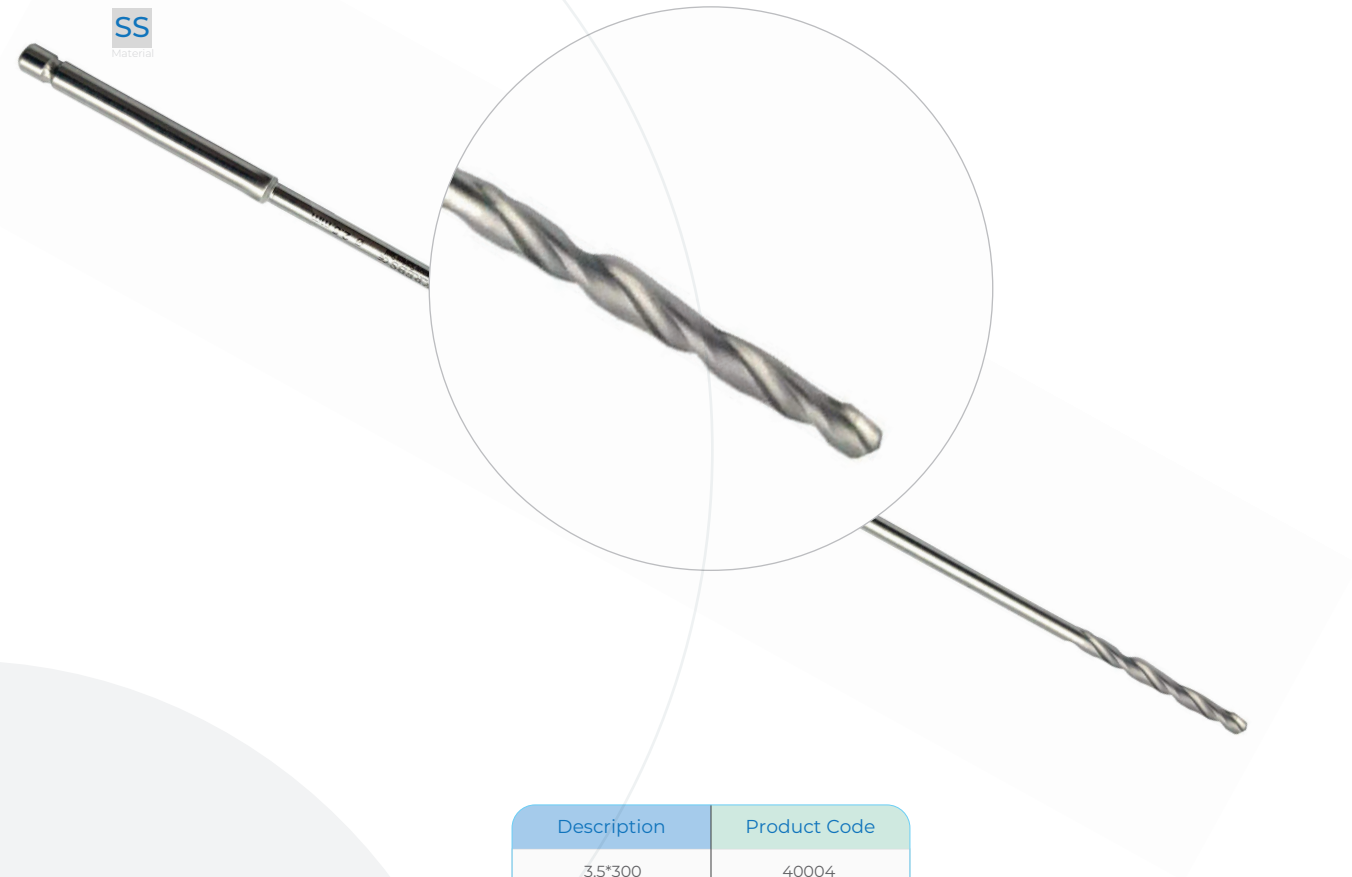
INSTRUMENT

kowsarmedical.com



Drill Bit

SS
Material



Description	Product Code
3.5*300	40004
4*250	100082
4*300	100081
4.5*300	100083

Guide Pin

SS
Material



Description	Product Code
3.2*400	100131

Main Nail hammer Link Pole

SS
Material

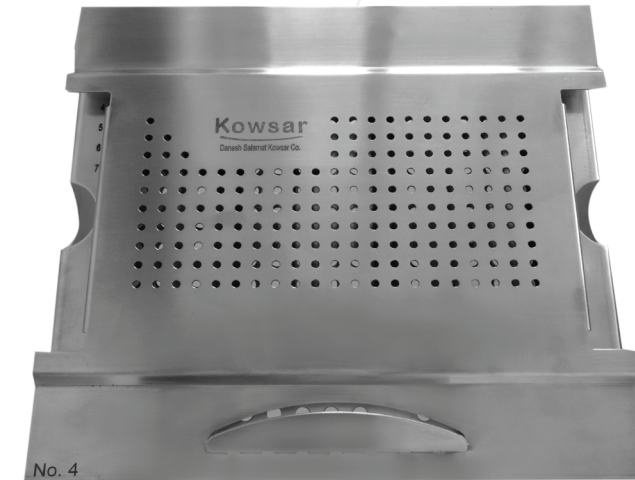


Product Code

20093

Bone Screw Sterilizing Tray

SS
Material



Product Code

20092

Kowsar

Danesh Salamat Kowsar Co.
شرکت موقوفه دانش سلامت کوثر





Table Of Content

K1

Poly Axial Long Arm Pedicle Screw
Nut
Cross Link

K2

Poly Axial Long Arm Pedicle Screw
Poly Axial Short Arm Pedicle Screw
Nut
Rod - System 6

K3

Poly Axial Long Arm Pedicle Screw
Nut
Cross Link
Rod - System 5.5

K4

Poly Axial Long Arm Pedicle Screw
Nut
Cross Link
Rod - System 5.5

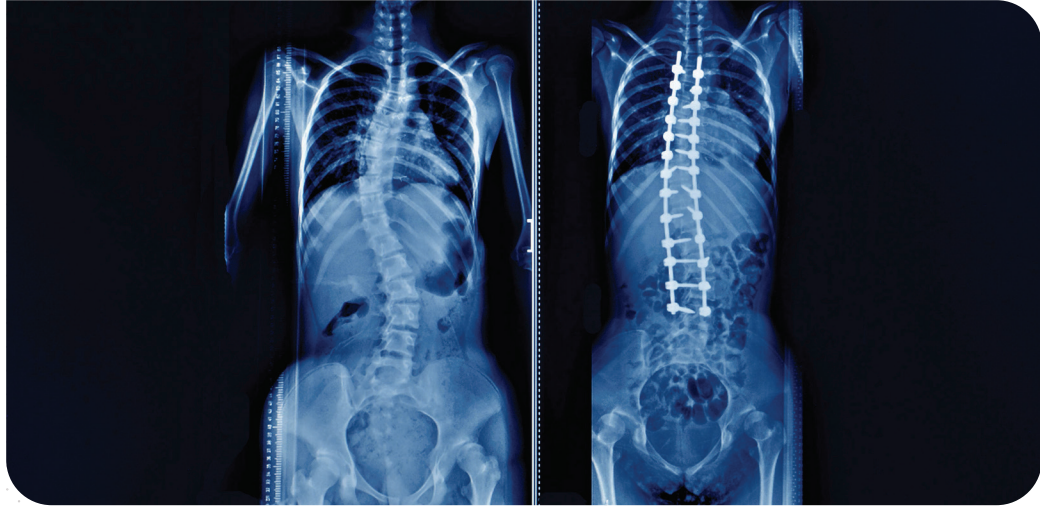


SPINE

- Comprehensive screw offering for varying patient anatomy.
- Self-Tapping feature
- Design that minimizes vertebral deformation and soft tissue interaction.
- Easy Locking
- Ability to accept Ø5.5 and Ø6.0 mm rods

kowsarmedical.com





K1

Poly Axial Long Arm Pedicle Screw
Nut
Cross Link

- Cutting flute allows for easier insertion and elimination of tapping
- Comprehensive Screw Offering for Varying Patient Anatomy
- Self-Tapping Feature
- Design that Minimizes Deformation and Soft Tissue Interaction
- Easy Locking
- Compatible with power and navigation platforms



Poly Axial Long Arm Pedicle Screw



Description	Product Code
4.5*20	11572
4.5*25	13527
4.5*30	80082
4.5*35	13528
4.5*40	13529
4.5*45	11573
4.5*50	11574
4.5*55	11575
4.5*60	11576
5.5*20	11577
5.5*25	11578
5.5*30	12174
4.5*20	11572
4.5*25	13527
4.5*30	80082
4.5*35	13528
4.5*40	13529
4.5*45	11573
4.5*50	11574
4.5*55	11575
4.5*60	11576
5.5*20	11577
5.5*25	11578
5.5*30	12174
4.5*20	11572
4.5*25	13527
4.5*30	80082
4.5*35	13528
4.5*40	13529
4.5*45	11573
4.5*50	11574
4.5*55	11575
4.5*60	11576
5.5*20	11577
5.5*25	11578
5.5*30	12174

Cross Link



Description	Product Code
6*150	80072

Nut



Description	Product Code
Nut K1	72986



K2

Poly Axial Long Arm Pedicle Screw
Poly Axial Short Arm Pedicle Screw
Nut
Rod - System 6

- Comprehensive Screw Offering for Varying Patient Anatomy
- Self-Tapping Feature
- Design that Minimizes Deformation and Soft Tissue Interaction
- Easy Locking
- Simple closure mechanism with a locking nut secures the screws to the rod in one step
- Reduce the need for rod shaping
- The flexibility of the system allows freedom for the surgeon by the surgical technique by different pathologies



Poly Axial Long Arm Pedicle Screw

Ti K2
Material System



Description	Product Code	Description	Product Code
4*30	11735	7*30	11624
4*35	11736	7*35	11625
4*40	11737	7*40	11626
4*45	11738	7*45	11627
4*50	11739	7*50	11628
4*55	11740	7*55	11629
4*60	11741	7*60	11630
4.5*30	11589	7*65	11631
4.5*35	72309	7*70	11632
4.5*40	74008	7*75	11633
4.5*45	72311	7*80	11634
4.5*50	72312	7*85	11635
4.5*55	11594	7*90	11636
4.5*60	11595	7*95	11637
5*30	11596	7*100	11638
5*35	11597	7*105	11639
5*40	11598	7*110	11640
5*45	11599	7*115	11641
5*50	11600	7*120	11642
5*55	11601	7.5*30	11643
5*60	11602	7.5*35	72324
5.5*30	11603	7.5*40	72325
5.5*35	72313	7.5*45	730111
5.5*40	72701	7.5*50	72327
5.5*45	72469	7.5*55	72328
5.5*50	72468	7.5*60	72329
5.5*55	72317	7.5*65	72330
5.5*60	11609	7.5*70	72331
6*30	11610	7.5*75	72332
6*35	11611	7.5*80	72333
6*40	11612	7.5*85	72334
6*45	11613	7.5*90	11655
6*50	11614	7.5*95	11656
6*55	11615	7.5*100	11657
6*60	11616	7.5*105	11658
6.5*30	11617	7.5*110	11659
6.5*35	72464	7.5*115	11660
6.5*40	74006	7.5*120	11661
6.5*45	72320		
6.5*50	72321		
6.5*55	730110		
6.5*60	72322		

Nut

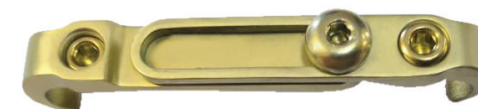
Ti K2
Material System



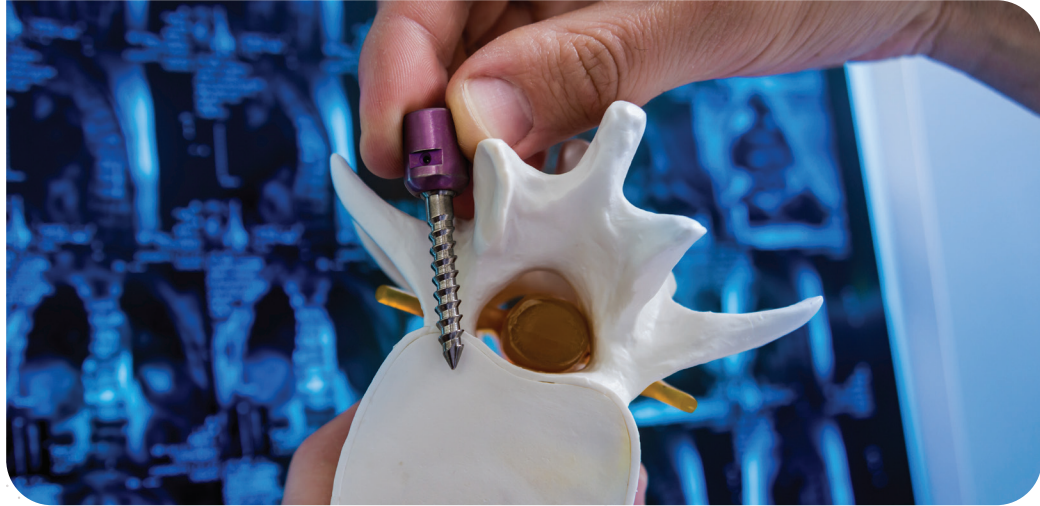
Description	Product Code
Nut K2	72368

Adjustable Cross Link

Ti K2
Material System



Description	Product Code
6*40	990906
6*50	990907
6*60	990908
6*70	990909
6*80	990910
6*90	990911
6*100	990912
6*150	990913
6*200	990914
6*300	80071
6*400	731368
6*500	990915
6*600	993173



K3

Poly Axial Long Arm Pedicle Screw
Nut
Cross Link
Rod - System 5.5

- Comprehensive Screw Offering for Varying Patient Anatomy
- Self-Tapping Feature
- Design that Minimizes Deformation and Soft Tissue Interaction
- Easy Locking
- Straight or pre-bent rods
- Mono/poly axial screws allowing 40° adjustment.
- Supplied non-sterile.



Poly Axial Long Arm Pedicle Screw

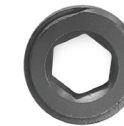
Ti K3
Material System



Description	Product Code	Description	Product Code
4.5*20	100485	6.5*20	100503
4.5*25	100486	6.5*25	100504
4.5*30	100487	6.5*30	100505
4.5*35	100488	6.5*35	100506
4.5*40	100489	6.5*40	100507
4.5*45	100490	6.5*45	100508
4.5*50	100491	6.5*50	100509
4.5*55	100492	6.5*55	100510
4.5*60	100493	6.5*60	100511
5.5*20	100494	7.5*20	100512
5.5*25	100495	7.5*25	100513
5.5*30	100496	7.5*30	100514
5.5*35	100497	7.5*35	100515
5.5*40	100498	7.5*40	100516
5.5*45	100499	7.5*45	100517
5.5*50	100500	7.5*50	100518
5.5*55	100501	7.5*55	100519
5.5*60	100502	7.5*60	100520

Nut

Ti K3
Material System



Description	Product Code
100523	-

Cross Link

Ti K3
Material System



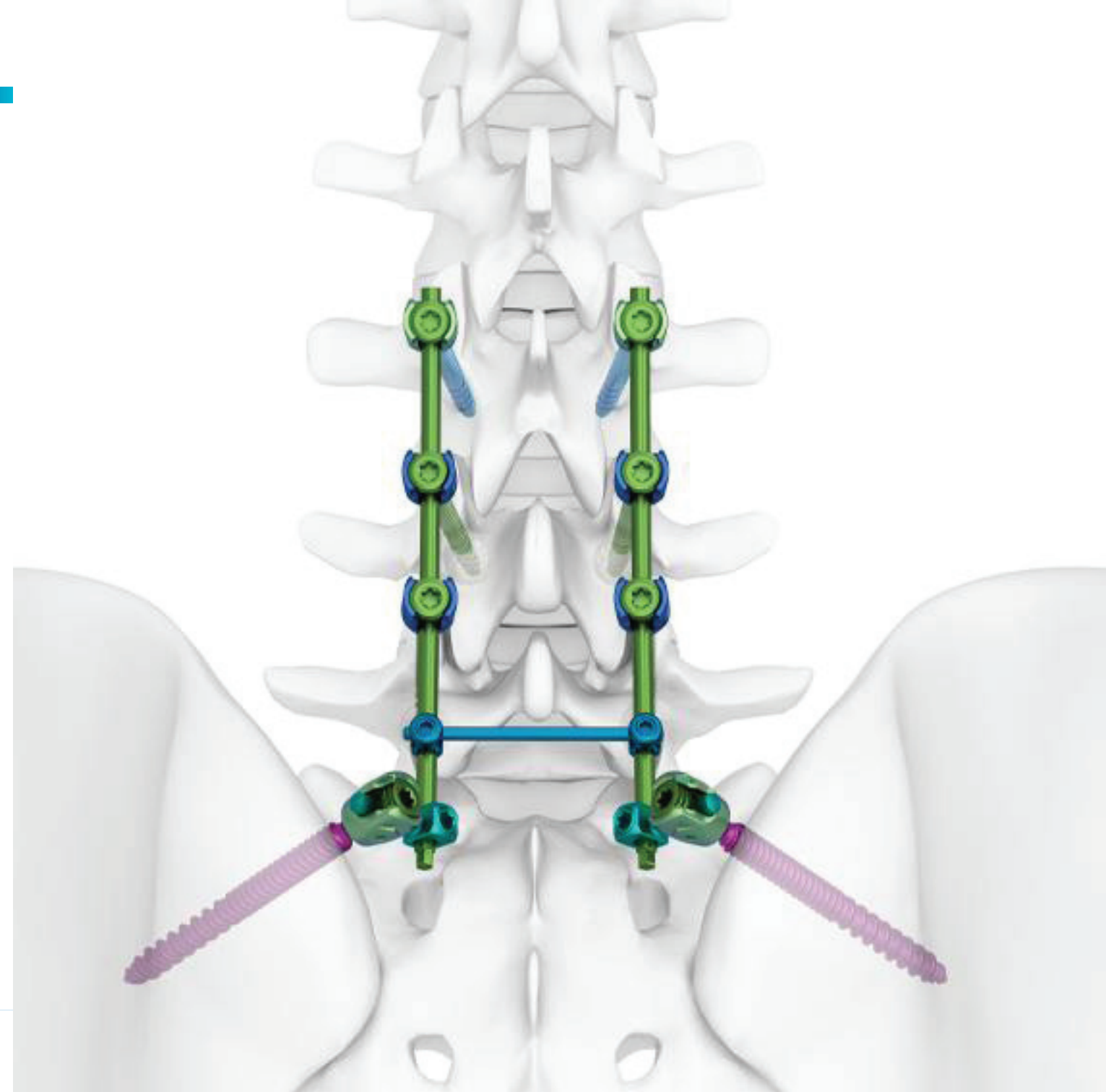
Description	Product Code
100524	-

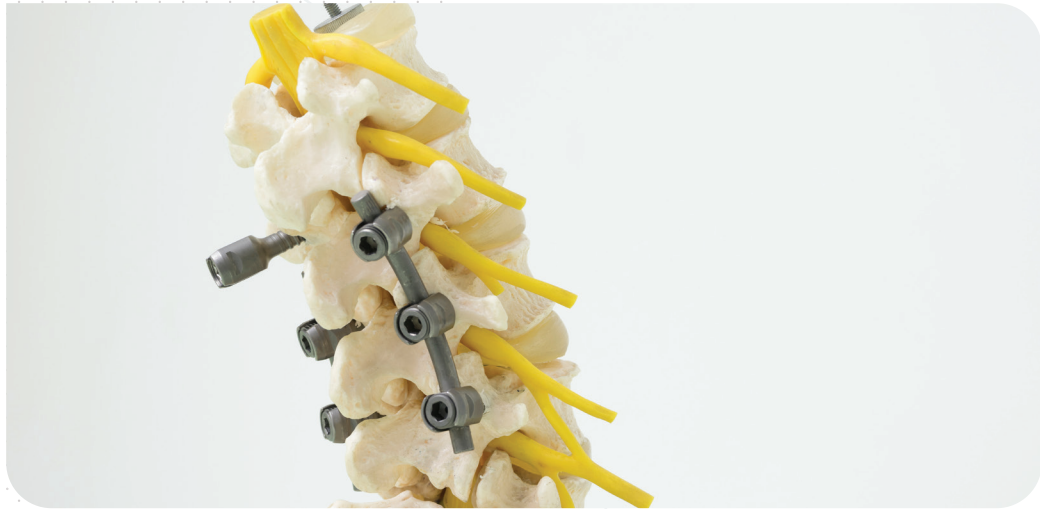
Rod

Ti K3 System 5.5
Material System



Description	Product Code
991116	5.5*500
991115	5.5*400
991114	5.5*300
991113	5.5*200
991112	5.5*150
991111	5.5*100
991110	5.5*90
991109	5.5*80
991108	5.5*70
991106	5.5*50
991105	5.5*40





K4

Poly Axial Long Arm Pedicle Screw
Nut
Cross Link
Rod - System 5.5

- Comprehensive Screw Offering for Varying Patient Anatomy
- Self-Tapping Feature
- Design that Minimizes Deformation and Soft Tissue Interaction
- Easy Locking
- NAVIGATION OPTION



Poly Axial Long Arm Pedicle Screw

Ti K4
Material System



Description	Product Code
5.5*30	992449
5.5*35	992450
5.5*40	992451
5.5*45	992452
5.5*50	992453
5.5*55	992454
5.5*60	992455
5.5*65	992456
5.5*70	992457
6.5*30	992443
6.5*35	992444
6.5*40	20424
6.5*45	20425
6.5*50	20426
6.5*55	992445
6.5*60	992446
6.5*65	992447
6.5*70	992448
7.5*30	992458
7.5*35	992459
7.5*40	992460
7.5*45	992461
7.5*50	992462
7.5*55	992463
7.5*60	992464
7.5*65	992465
7.5*70	992466

Nut

Ti K4
Material System



Description	Product Code
Nut K4	20429

Cross Link

Ti K4
Material System



Description	Product Code
6*80	100447
6*70	100525
6*60	100526

Poly Axial Short Arm Pedicle Screw



Description	Product Code	Description	Product Code
4.5*30	11662	7*30	11697
4.5*35	11663	7*35	11698
4.5*40	11664	7*40	11699
4.5*45	11665	7*45	11700
4.5*50	11666	7*50	11701
4.5*55	11667	7*55	11702
4.5*60	11668	7*60	11703
5*30	11669	7*65	11704
5*35	11670	7*70	11705
5*40	11671	7*75	11706
5*45	11672	7*80	11707
5*50	11673	7*85	11708
5*55	11674	7*90	11709
5*60	11675	7*95	11710
5.5*30	11676	7*100	11711
5.5*35	11677	7*105	11712
5.5*40	11678	7*110	11713
5.5*45	11679	7*115	11714
5.5*50	11680	7*120	11715
5.5*55	11681	7.5*30	11716
5.5*60	11682	7.5*35	11717
6*30	11683	7.5*40	11718
6*35	11684	7.5*45	11719
6*40	11685	7.5*50	11720
6*45	11686	7.5*55	11721
6*50	11687	7.5*60	11722
6*55	11688	7.5*65	11723
6*60	11689	7.5*70	11724
6.5*30	11690	7.5*75	11725
6.5*35	11691	7.5*80	11726
6.5*40	72305	7.5*85	11727
6.5*45	72306	7.5*90	11728
6.5*50	72307	7.5*95	11729
6.5*55	72308	7.5*100	11730
6.5*60	11696	7.5*105	11731
		7.5*110	11732
		7.5*115	11733
		7.5*120	11734

Rod



System 5.5



Description	Product Code
5.5*40	20437
5.5*50	20435
5.5*60	20433
5.5*70	20432
5.5*80	20431
5.5*90	20430
5.5*100	20440
5.5*150	20439
5.5*200	20438
5.5*300	20441
5.5*400	20436
5.5*500	20434

Kowsar

Danesh Salamat Kowsar Co.
شرکت موقوفه دانش سلامت کوثر



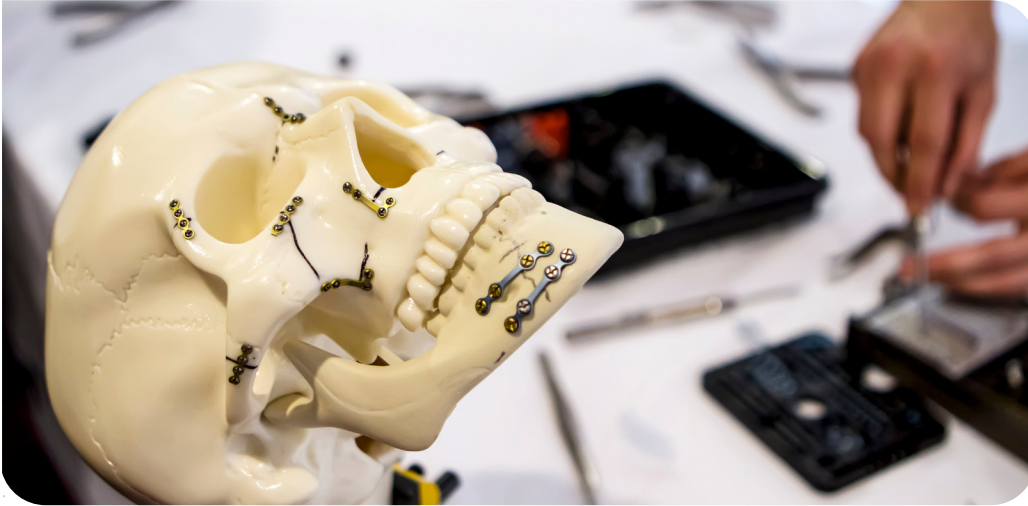


Table Of Content

CRANIOMAXILLOFACIAL CMF

- CRANIOPLASTY
- MAXILLOFACIAL
- INSTRUMENT



CRANIOPLASTY

- Available in a Variety Shapes and Sizes to Meet the Anatomical Needs of the Patient
- Rounded edges on plates
- Providing a Wide Range of Internal Fixation Options
- Mesh is Used to Provide Additional Support When Repairing Weakened or Damaged Tissue
- System is Complemented by a Variety of Screws in 1.6 and 1.7 mm Sizes

PRODUCT

- Matrix Neuro Cranial Plate Straight
- Y Plate
- Double Y - Plate
- Plate, Straight
- Burr Hole Covers Plate
- Self - Drilling NEURO CROSS-FIT Screw
- Hexagonal Mesh
- Flexible Mesh
- Triangular Mesh



Matrix Neuro Cranial Plate Straight

Ti
Material



Hole	Description	Product Code
2	Bar 9	21004
2	Bar 12	21005



Hole	Description	Product Code
4		21006

Y-Plate

Ti
Material



Hole	Description	Product Code
5	Bar 9	21091
5		21037

Double Y-Plate

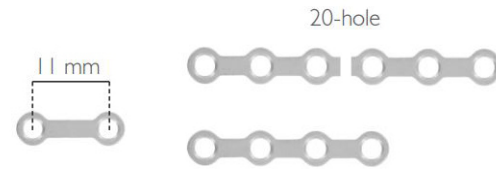
Ti
Material



Hole	Description	Product Code
	18	21091
	21	21037

Straight Plate

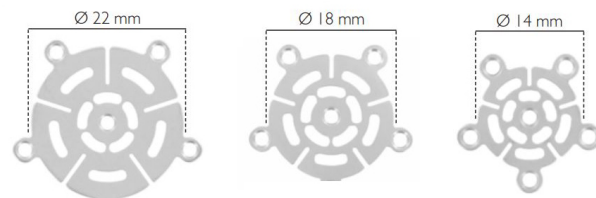
Ti
Material



Hole	Description	Product Code
2		21005
4		21006

Burr Hole Covers Plate

Ti
Material



Hole	Description	Product Code
5	Ø 14	21007
5	Ø 18	21008
5	Ø 22	21009

Self-Drilling NEURO CROSS-FIT Screw

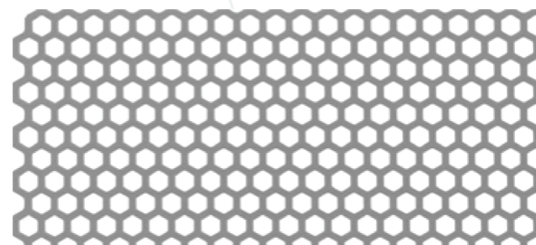
Ti
Material



Description	Product Code
1.6*4	73452
1.6*5	20384
1.6*6	97164
1.7*4	80061
1.7*5	80062
1.7*6	21003

Hexagonal Mesh

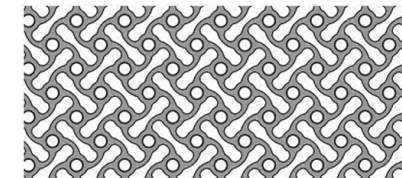
Ti
Material



Description	Product Code
100*100	21010
100*200	21011
200*200	21012

Flexible Mesh

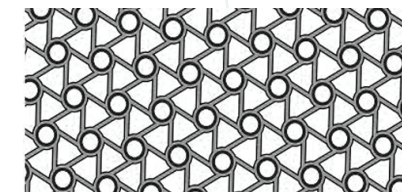
Ti
Material



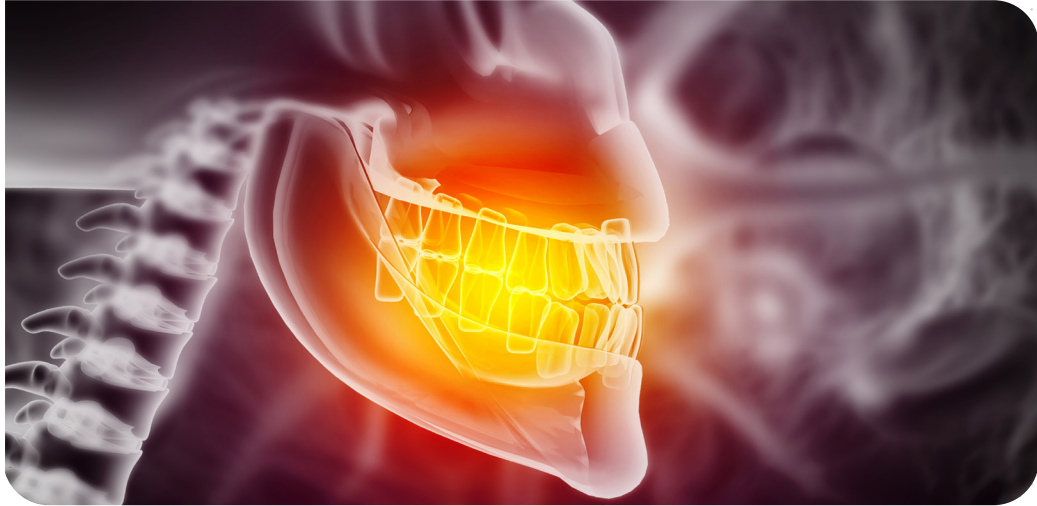
Thickness	Description	Product Code
0.6	100*100	21085
0.6	200*200	21086

Triangular Mesh

Ti
Material



Thickness	Description	Product Code
0.5	100*100	21013
0.5	100*200	21014



MAXILLOFACIAL

- Available in a Variety Shapes and Sizes to Meet the Anatomical Needs of the Patient
- Rounded edges on plates
- Providing a Wide Range of Internal Fixation Options
- System is Complemented by a Variety of Screws in 1.2, 2 and 2.3 mm Sizes

PRODUCT

- BULL Chinplate
- STANDARD Chinplate
- Le Fort I Plate, 110°, left
- Le Fort I Plate, 110°, right
- L-Plate
- Y-Plate
- T-Plate
- Straight Plate
- Orbital Plate
- IMF Screws - CROSS-FIT Screw - Self-Drilling
- IMF Screws - CROSS-FIT Screw - Self-Tapping
- CROSS-FIT Screw - Micro 1200
- CROSS-FIT Mini 2000
- CROSS-FIT Emergency Screw
- CROSS-FIT S-DRIVE Screw



BULL Chinplate

Ti
Material



Description	Thickness	Product Code
Bar 4	0.6	21071
Bar 6	0.6	21072
Bar 8	0.6	21073
Bar 10	0.6	21074

STANDARD Chinplate

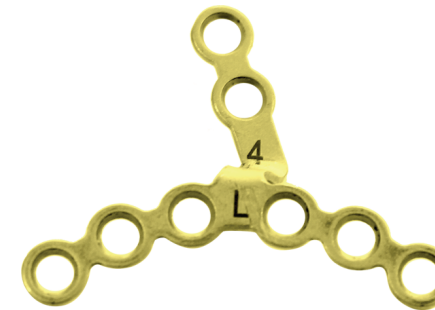
Ti
Material



Description	Thickness	Product Code
Bar 4	0.6	21067
Bar 6	0.6	21068
Bar 8	0.6	21069
Bar 10	0.6	21070

Le Fort I Plate, 110°, left

Ti
Material



Description	Thickness	Product Code
Bar 4	0.8	21061
Bar 6	0.8	21062
Bar 8	0.8	21063

Le Fort I Plate, 110°, right

Ti
Material



Description	Thickness	Product Code
Bar 4	0.8	21064
Bar 6	0.8	21065
Bar 8	0.8	21066

L-Plate

Ti
Material



Description	Hole	Bar	Thickness	Product Code
right	4	9	1	21024
left	4	9	1	21025
right	4	12	1	21026
left	4	12	1	21027
right	4	15	1	21028
left	4	15	1	21029
right	5	12	1	21030
left	5	12	1	21031

Y-Plate

Ti
Material



Description	Hole	Bar	Thickness	Product Code
Y-Plate	5		1	21091
Y-Plate	5	9	1	21037
Double Y	6		1	21038
Double Y-Plate	6	12	1	21039

T-Plate

Ti
Material



Description	Hole	Bar	Thickness	Product Code
T-Plate	5		1	21032
T-Plate	6		1	21033
Double T-Plate	6		1	21034
Double T-Plate,	4	19	1	21035

Straight Plate

Ti
Material



Hole	Bar	Product Code
2		32687
4	9	21018
4		21017
5		21019
6	12	21021
6		21020
8		21022
16		21023

Orbital Plate

Ti
Material



Hole	Bar	Product Code
6		21015
8		21016

IMF Screws - CROSS-FIT Screw Self-Drilling

Ti
Material



Description	Product Code
2*8	21089
2*11	21090
2*14	21091

IMF Screws - CROSS-FIT Screw Self-Tapping

Ti
Material



Description	Product Code
2*8	80051
2*11	80052
2*14	80053

CROSS-FIT Screw - Micro 1200

Ti
Material



Description	Product Code
1.2*5	73403
1.2*6	20097
1.2*7	32713
1.2*9	73404
1.2*11	80075
1.2*13	97165
1.2*15	97166
1.2*17	97167
1.2*19	97168

MCD Screw Mini 2000

Ti
Material



Description	Product Code
2*5	1328
2*7	21048
2*9	21049
2*11	21050
2*13	21051
2*15	21052
2*17	21053
2*19	21054

CROSS-FIT Emergency Screw

Ti
Material



Description	Product Code
2.3*5	21055
2.3*7	21056
2.3*9	21057

- For the First Time in Iran
- New Generation of Mandible and Face Screws: System 1000 and Micro 1400
- Available in 1 and 1.4 mm Diameter
- High Tech Design due to its Diameter and Thread
- The System 1000 is Provided with Square Head

CROSS-FIT S-DRIVE Screw

Ti
Material



Description	Product Code
2*5	13520
2*7	80057

CROSS-FIT Screw Micro 1400

Ti
Material



Description	Product Code
1.4*4	140020
1.4*5	140030
1.4*6	97169
1.4*8	140010
1.4*10	140036
1.4*12	140035

Maxillofacial General Self Tapping Screw

Ti
Material



Description	Product Code
4*1000	100096
6*1000	100097
8*1000	100095
10*1000	100098
12*1000	100099
14*1000	100100
16*1000	100101



MANDIBULAR RECONSTRUCTION SYSTEM

- Provides in 2.8 mm Thickness
- To Repair Injuries Caused by Accidents, Tumor Removal Surgery and Unusual Birth Defects
- Can be used with Temporomandibular Joint Prosthesis and 2.7 mm CROSS-FIT Screws

PRODUCT

- Reconstruction Plate, Th 2.8
- Reconstruction Template, Th 2.8
- Temporomandibular Joint Prosthesis
- Screw - Diameter 2.7 mm



Reconstruction Plate

Thickness: 2.8

Ti
Material



Description	Product Code
BMR 2.8 Plate, 8-hole straight	80065
BMR 2.8 Plate, 10-hole straight	13513
BMR 2.8 Plate, 12-hole straight	97241
BMR 2.8 Plate, 14-hole straight	97240
BMR 2.8 Plate, 16-hole straight	97243
BMR 2.8 Plate, 18-hole straight	13512
BMR 2.8 Plate, 5+8 hole angled right	97246
BMR 2.8 Plate, 5+8 hole angled left	97245
BMR 2.8 Plate, 5+12 hole angled right	97247
BMR 2.8 Plate, 5+12 hole angled left	97248
BMR 2.8 Plate, 5+16 hole angled right	13516
BMR 2.8 Plate, 5+16 hole angled left	97244
BMR 2.8 Plate, 5+20 hole angled right	13515
BMR 2.8 Plate, 5+20 hole angled left	13514
BMR 2.8 Plate, 5+20+5 hole, complete mandible	13517

Reconstruction Template

Thickness: 2.8

Ti
Material



Description	Product Code
BMR 2.8 Plate, 8-hole, straight	100077
BMR 2.8 Plate, 10-hole, straight	100078
BMR 2.8 Plate, 12-hole, straight	100079
BMR 2.8 Plate, 14-hole, straight	100080
BMR 2.8 Plate, 16-hole, straight	13521
BMR 2.8 Plate, 18-hole, straight	13523
BMR 2.8 Plate, 5+8 hole, right curved	73978
BMR 2.8 Plate, 5+8 hole, left curved	73982
BMR 2.8 Plate, 5+12 hole, right curved	73979
BMR 2.8 Plate, 5+12 hole, left curved	13524
BMR 2.8 Plate, 5+16 hole, right curved	73980
BMR 2.8 Plate, 5+16 hole, left curved	13522
BMR 2.8 Plate, 5+20 hole, right curved	73981
BMR 2.8 Plate, 5+20 hole, left curved	73983
BMR 2.8 Plate, 5+20+5 hole, complete mandible	73986

Temporomandibular Joint Prosthesis

Ti
Material



Description	Product Code
Right/Left, incl. 2 CF Fixation Screw	12810

Screw Diameter 2.7 mm

Ti
Material



Description	Product Code
2*5	13520
2*7	80057



INSTRUMENT



Screwdriver Handle, 9.5 cm



Product Code

80067

CROSS-FIT Holder blade Self-retaining



Product Code

74623

Screwdriver handle, 10 cm



Product Code

21087

CROSS-FIT blade Self-retaining 1200



Product Code

80056

Screwdriver handle, 10 cm



Product Code

21087

CROSS-FIT blade Self-retaining



Product Code

73633

Screwdriver Handle, 9.5 cm



Product Code

80067

CROSS-FIT blade Self-retaining



Product Code

13539

Kowsar

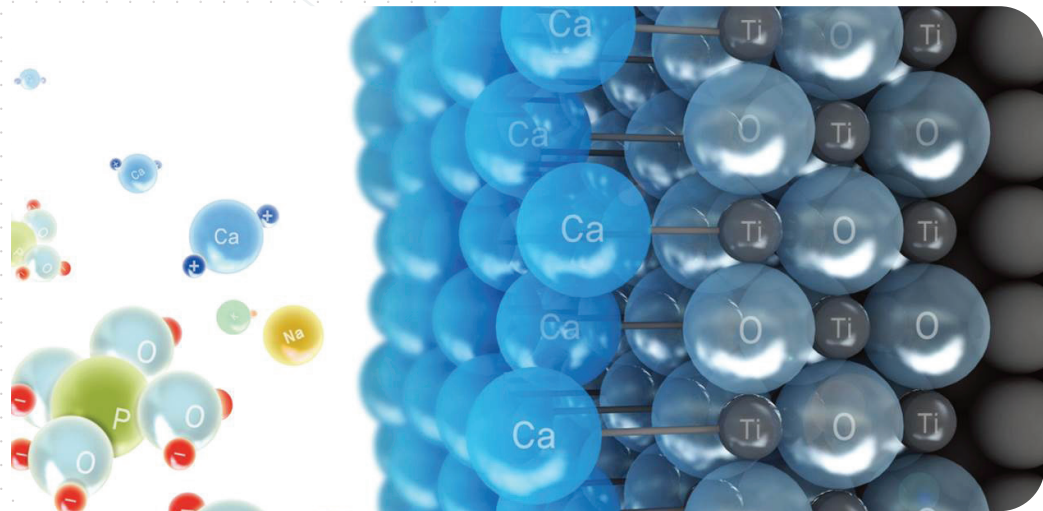
Danesh Salamat Kowsar Co.
شرکت موقوفه دانش سلامت کوثر





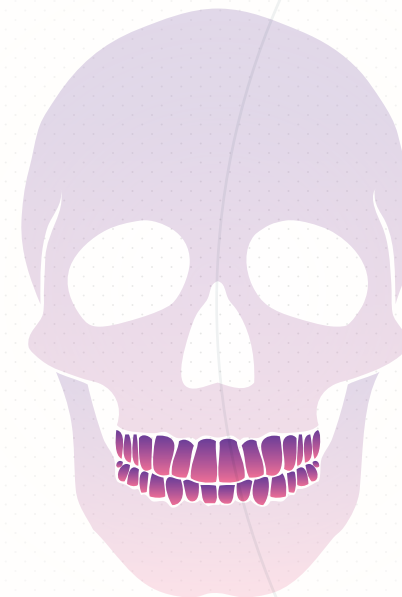
Table Of Content

- Fixture Regular - Hex 2.5
- Healing Abutment Regular & Wide - Hex 1.2
- Cemented Abutment - Hex - Regular & Wide
- Angled Abutment - Hex A/B - Regular & Wide - 15/25 degree
- Ball Abutment - Regular & Wide
- Pick up Impression - Regular & Wide - Hex
- Transfer Impression - Regular & Wide - Hex
- Ball Abutment Analog - Regular & Wide
- Fixture Analog - Regular & Wide



DENTAL

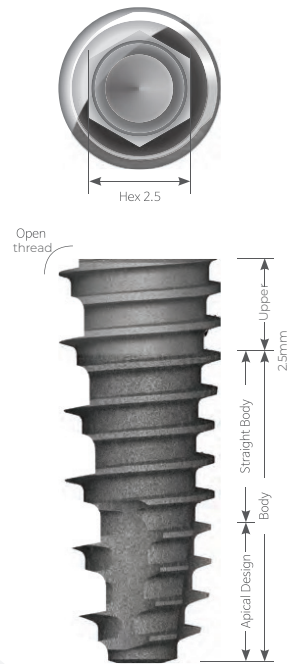
- Include Fixture, Analog and Different Types of Abutments and Impressions
- Provide by SLActive Surface which Speeds Up the Healing Process
- High Tech Design
- Healing abutment used for small diameter abutment like ball abutment and if the fixture is deeply placed
- Fixture analog Providing anchor point for fabricating implant prosthetics on working model
- cemented abutment to prevent rotation of prosthesis it has flap section
- angled abutment used to modify the fixtures path mainly used for anterior teeth
- Ball abutment used to create over-denture for edentulous patient and when fixed type prosthesis is difficult due to severe bone or soft tissue loss
- Made from Medical Grade Titanium
- Fixture Provides Sterilized with EO



Fixture

Regular - Hex 2.5

Ti
Material

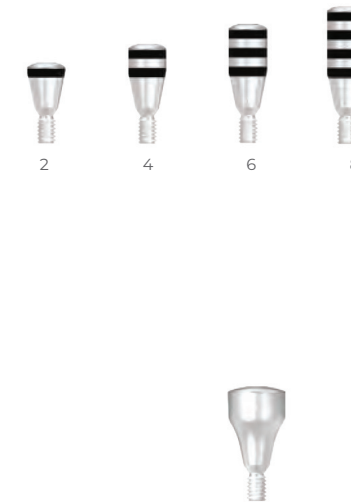


Description	Product Code
3.8*8.5	100229
3.8*10	100230
3.8*11.5	100231
3.8*13	100232
4*8.5	100233
4*10	100234
4*11.5	100235
4*13	100236
4.5*8.5	100237
4.5*10	100238
4.5*11.5	100239
4.5*13	100240
5*8.5	100241
5*10	100242
5*11.5	100243
5*13	100244

Healing Abutment

Regular & Wide - Hex 1.2

Ti
Material



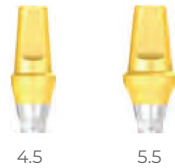
Description	Product Code
4*2	100245
4*4	100246
4*6	100247
4*8	100248

Description	Product Code
5.6*2	100253
5.6*4	100254
5.6*5.5	100255
5.6*7	100256

Cemented Abutment

Hex - Regular & Wide

Ti
Material

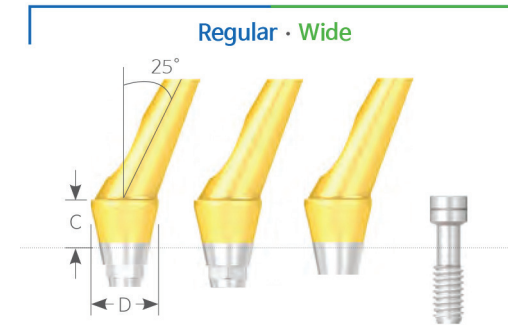


Description	Product Code	Description	Product Code
4.5*4 - Cuff 1	100268	5.5*5.5 - Cuff 1	100283
4.5*4 - Cuff 2	100269	5.5*5.5 - Cuff 2	100284
4.5*4 - Cuff 3	100270	5.5*5.5 - Cuff 3	100285
4.5*4 - Cuff 4	100271	5.5*5.5 - Cuff 4	100286
4.5*4 - Cuff 5	100272	5.5*5.5 - Cuff 5	100287
5.5*4 - Cuff 1	100273	4.5*7 - Cuff 1	100288
5.5*4 - Cuff 2	100274	4.5*7 - Cuff 2	100289
5.5*4 - Cuff 3	100275	4.5*7 - Cuff 3	100290
5.5*4 - Cuff 4	100276	4.5*7 - Cuff 4	100291
5.5*4 - Cuff 5	100277	4.5*7 - Cuff 5	100292
4.5*5.5 - Cuff 1	100278	5.5*7 - Cuff 1	100293
4.5*5.5 - Cuff 2	100279	5.5*7 - Cuff 2	100294
4.5*5.5 - Cuff 3	100280	5.5*7 - Cuff 3	100295
4.5*5.5 - Cuff 4	100281	5.5*7 - Cuff 4	100296
4.5*5.5 - Cuff 5	100282	5.5*7 - Cuff 5	100297

Cemented Abutment

Hex - Regular & Wide

Ti
Material



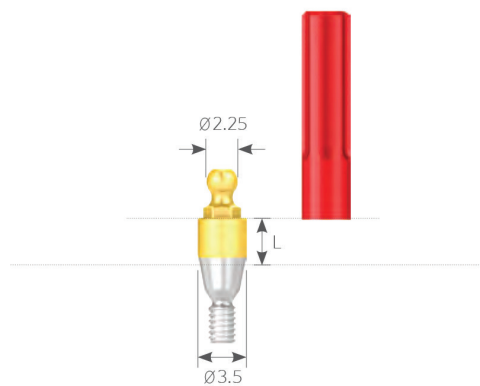
Description	Product Code
15 degree - Diameter 4.5 - Cuff 1.5	100298
15 degree - Diameter 4.5 - Cuff 2	100299
15 degree - Diameter 4.5 - Cuff 3	100300
15 degree - Diameter 4.5 - Cuff 4	100301
15 degree - Diameter 4.5 - Cuff 5	100302
25 degree - Diameter 4.5 - Cuff 1.5	100303
25 degree - Diameter 4.5 - Cuff 2	100304
25 degree - Diameter 4.5 - Cuff 3	100305
25 degree - Diameter 4.5 - Cuff 4	100306
25 degree - Diameter 4.5 - Cuff 5	100307
15 degree - Diameter 5.5 - Cuff 1.5	100308
15 degree - Diameter 5.5 - Cuff 2	100309
15 degree - Diameter 5.5 - Cuff 3	100310
15 degree - Diameter 5.5 - Cuff 4	100311
15 degree - Diameter 5.5 - Cuff 5	100312
25 degree - Diameter 5.5 - Cuff 1.5	100313
25 degree - Diameter 5.5 - Cuff 2	100314
25 degree - Diameter 5.5 - Cuff 3	100315
25 degree - Diameter 5.5 - Cuff 4	100316
25 degree - Diameter 5.5 - Cuff 5	100317
15 degree - Diameter 5.5 - Cuff 1.5	100318
15 degree - Diameter 5.5 - Cuff 2	100319
15 degree - Diameter 5.5 - Cuff 3	100320
15 degree - Diameter 5.5 - Cuff 4	100321
15 degree - Diameter 5.5 - Cuff 5	100322
25 degree - Diameter 5.5 - Cuff 1.5	100323
25 degree - Diameter 5.5 - Cuff 2	100324
25 degree - Diameter 5.5 - Cuff 3	100325
25 degree - Diameter 5.5 - Cuff 4	100326
25 degree - Diameter 5.5 - Cuff 5	100327

Ball Abutment

Regular & Wide

Ti
Material

Regular · Wide



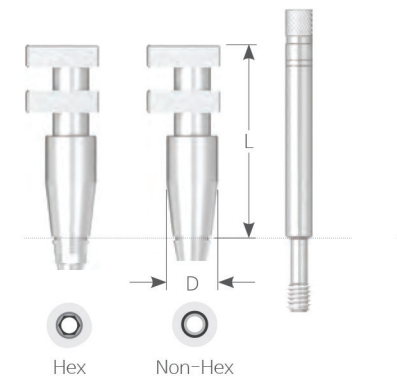
Description	Product Code
3.5*1	100328
3.5*2	100329
3.5*3	100330
3.5*4	100331
3.5*5	100332
3.5*6	100333

Pick up Impression

Regular & Wide - Hex

Ti
Material

Regular · Wide



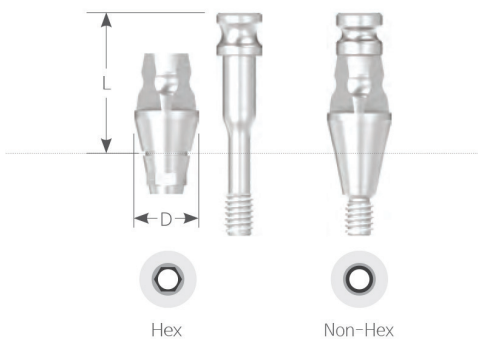
Description	Product Code
4.5*9	100257
4.5*13	100258
4.5*17	100259
5.5*9	100260
5.5*13	100261
5.5*17	100262

Transfer Impression

Regular & Wide - Hex

Ti
Material

Regular · Wide



Description	Product Code
4.5*10	100263
4.5*15	100264
5.5*10	100265
5.5*15	100266

Ball Abutment Analog

Regular & Wide

Ti
Material



Description	Product Code
3.5*10	100334

Fixture Analog

Regular & Wide

Ti
Material



Description	Product Code
4*12	100267

Kowsar

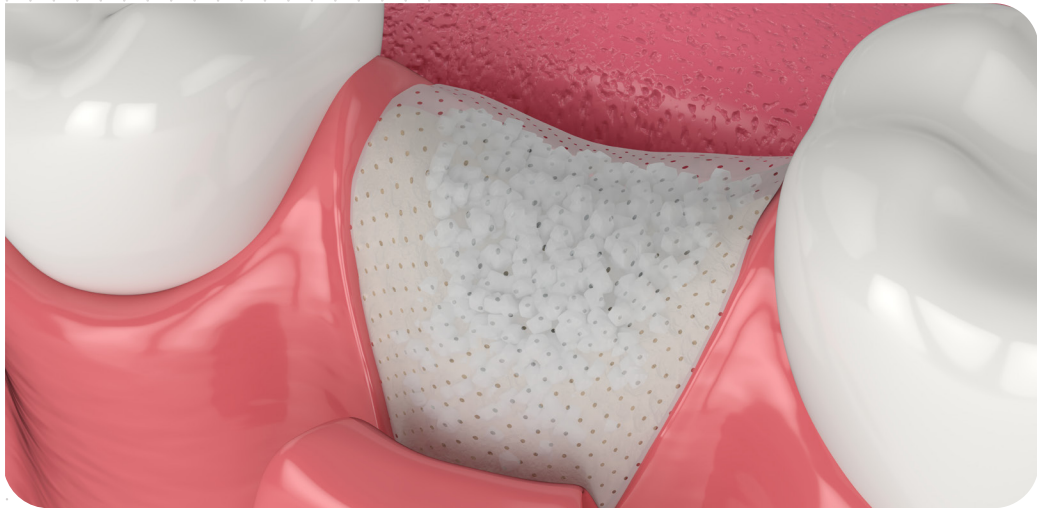
Danesh Salamat Kowsar Co.
شرکت موقوفه دانش سلامت کوثر





Table Of Content

Bone Graft
Injectable Bone Graft
Resorbable Collagen Membrane
Bicomposite Collagen Putty



BONE GRAFT

KOWSAR bone graft is a biphasic calcium phosphate synthetic bone graft substitute with a unique micro and macroporous structure that most closely resembles to the architecture of natural human bone. Soluble and resorbable, it gradually dissolves in the body, promoting new bone formation through the release of calcium and phosphate ions. In time, the porous structure becomes completely infiltrated with, and replaced by, healthy viable bone



It is intended for use as a bone graft to fill or reconstruct osseous bone defects or gaps of the skeletal system (e.g. extremities, spine, pelvis and dental). Osseous defects can occur as a result of a trauma or in surgically created defects.

Key Features:

Osteoconductive: Provides a matrix for new bone growth

Molecular mixture of HA and TCP: HA alone resorbs too slowly while TCP resorbs too fast. Bi-phasic HA and TCP allow for a resorption rate similar to that of human bone

70% porosity, similar to cancellous bone: Interconnected network of macropores and micropores that enables the colonization of bone cells and biological fluid uniformly within the matrix.

Bioactive: For ionic exchange: TCP dissolution and bone crystal precipitation create newly bioactive interface with bone cells.

Synthetic Bone Graft TCP/HA

Synthetic Bone Graft TCP/HA



Block

Description	Product Code
5*5*10 mm	100358
5*10*10 mm	100359
10*10*10 mm	100360
10*10*20 mm	100361
15*10*2 mm	100362
15*10*2 mm	100363
15*10*4 mm	100364



Stick

Description	Product Code
5*5*20 mm	100365



Wedge

Description	Product Code
6*10*15 mm	100366
7.5*10*15 mm	100367
9*10*15 mm	100368



Cylinder

Description	Product Code
6*15 mm	100369
7.5*15 mm	100370
10*15 mm	100371

Synthetic Bone Graft TCP/HA



Granule

Description	Product Code
3.4-4.8 mm	100372
3.4-9.5 mm	100373



Powder

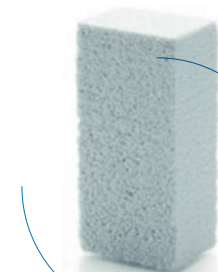
Description	Product Code
0.5-1 mm	100374
1-2 mm	100375
1-3.4 mm	100376

Synthetic Bone Graft TCP



Block

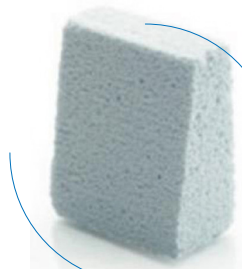
Description	Product Code
5*5*10 mm	100388
5*10*10 mm	100389
10*10*10 mm	100390
10*10*20 mm	100391
15*10*2 mm	100392
15*10*2 mm	100393
15*10*4 mm	100394



Stick

Description	Product Code
5*5*20 mm	100395

Synthetic Bone Graft TCP



Wedge

Description	Product Code
6*10*15 mm	100396
7.5*10*15 mm	100397
9*10*15 mm	100398



Cylinder

Description	Product Code
6*15 mm	100399
7.5*15 mm	100400
10*15 mm	100401

Synthetic Bone Graft TCP



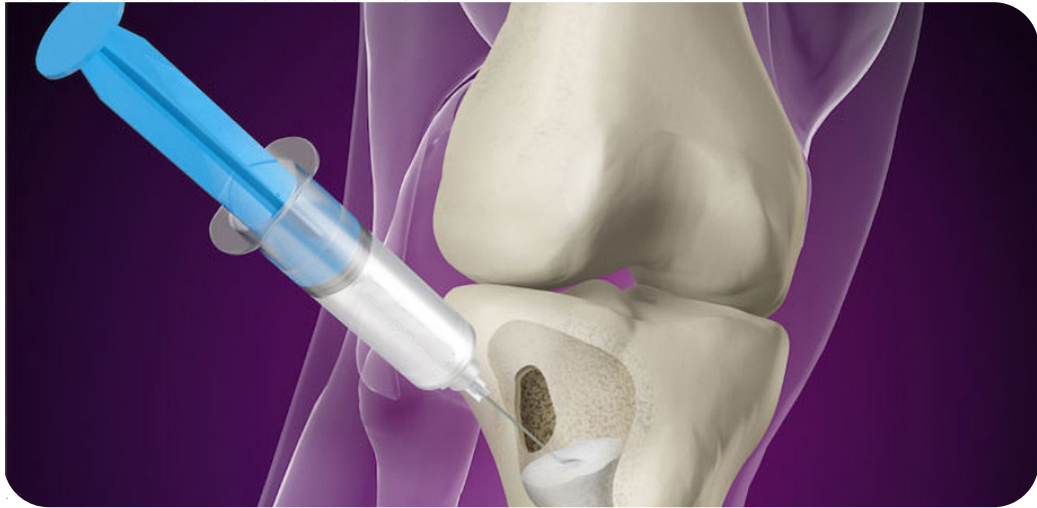
Granule

Description	Product Code
3.4-4.8 mm	100372
3.4-9.5 mm	100373



Powder

Description	Product Code
0.5-1 mm	100374
1-2 mm	100375
1-3.4 mm	100376

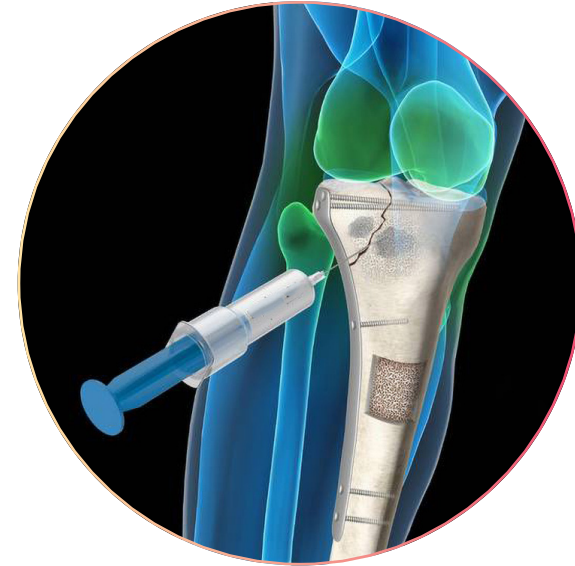


INJECTABLE BONE GRAFT

KOWSAR Injectable Bone Graft is a synthetic, pasty, injectable, biocompatible, resorbable and osteoconductive bone graft material similar to mineral phase of bone with high bio-activity in a ready-to-use syringe.

Moldable and easily shaped to pack into any defect.

Supports the formation of new vital bone, maintains volume and mechanical stability and is gradually replaced by mature new bone.



Offers to surgeon various possibilities of use: percutaneous surgery to fill closed bone defects or open surgery.

It is designed as a material intended for filling osseous defects that are not intrinsic to bone stability.

It is designed as a material intended for filling osseous defects that are not intrinsic to bone stability.

Orthopedic surgery :

- Filling after surgical curettage (cysts or benign tumors)
- Osseous defects caused by a traumatic bone lesion.

Spine surgery :

- Spine fusion
- Interbody cage filling

Dental or maxillofacial surgery :

- Filling after surgical curettage (cysts or benign tumors)
- Osseous defects caused by a traumatic bone lesion.
- Treatment of alveolar wall and crest defects

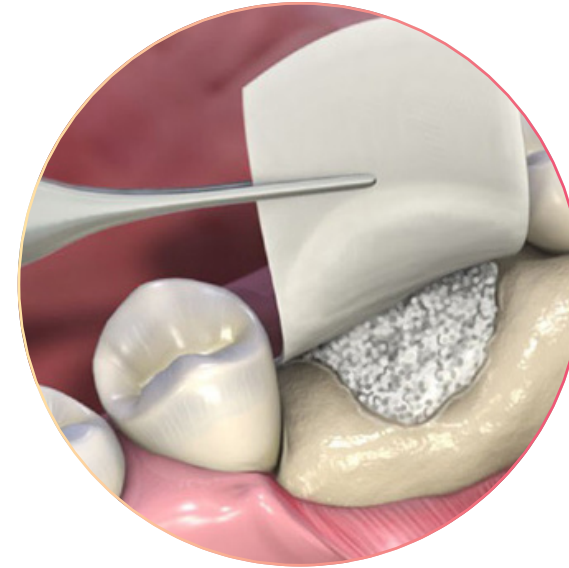
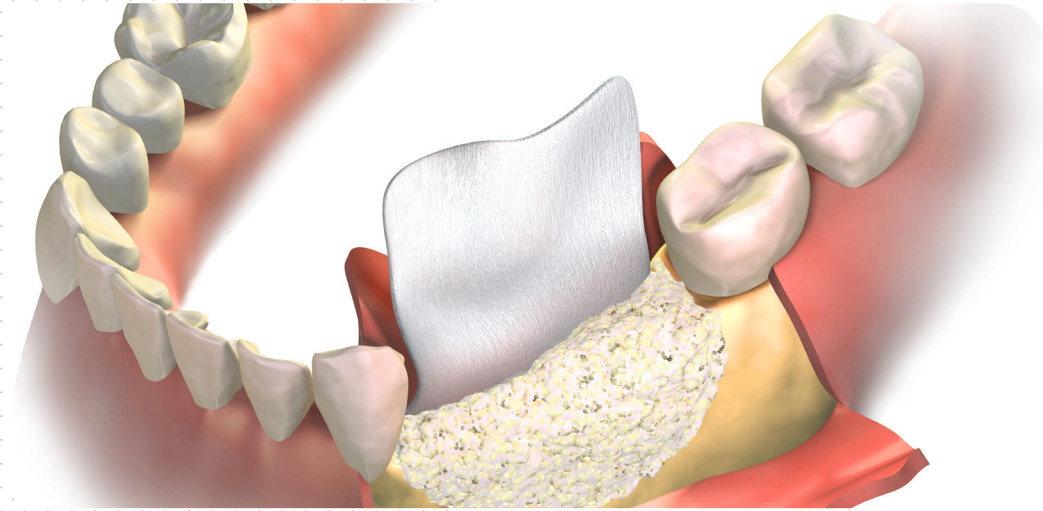
Injectable Bone Graft TCP/HA

Description	Product Code
0.5 cc	100385
1 cc	100386
2.5 cc	100387

Injectable Bone Graft HA

Description	Product Code
0.5 cc	100407
1 cc	100408
2.5 cc	100409





RESORBABLE COLLAGEN MEMBRANE

KOWSAR Resorbable Collagen Membrane is a native bovine collagen type 1 membrane made of bovine dermis, which is intended for soft tissue and dental bone regeneration. The natural, hemostatic effect of collagen enables early wound stabilization and supports the natural healing. Moreover, the KOWSAR Collagen Membrane displays a good surface adaptation and tissue integration and is ideal for most indications where an intermediate stability and easy handling are required.

Indications:

Implantology, Periodontology, Oral and CMF Surgery

- Protection and coverage of the Schneiderian membrane
- Sinus lift
- Socket preservation
- Horizontal ridge augmentation
- GBR and GTR with simultaneous use of bone graft
- Fenestration/dehiscence defects
- Intraosseous defects (1 to 3 walls)
- Furcation defects (class I and II)

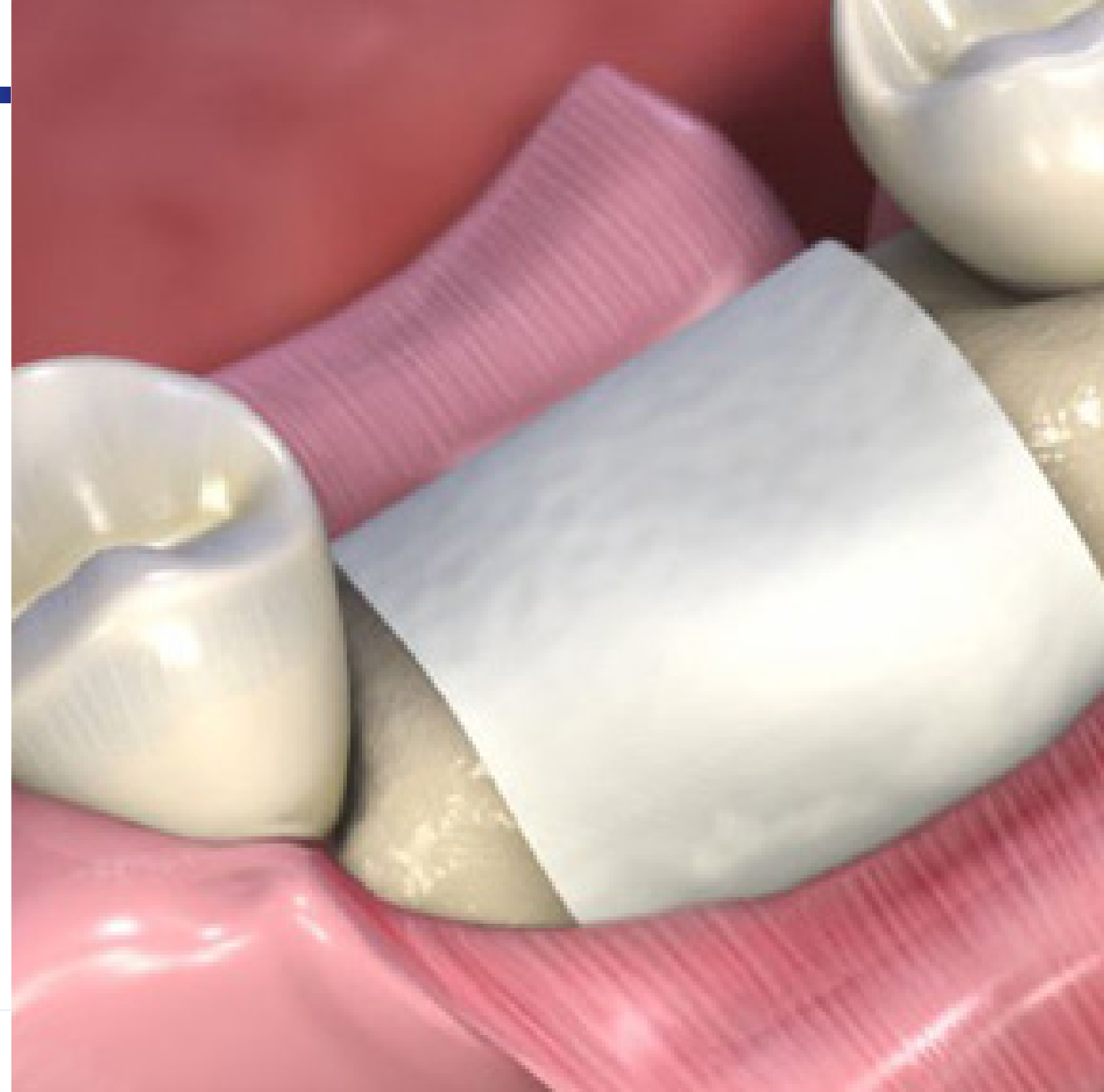
Properties

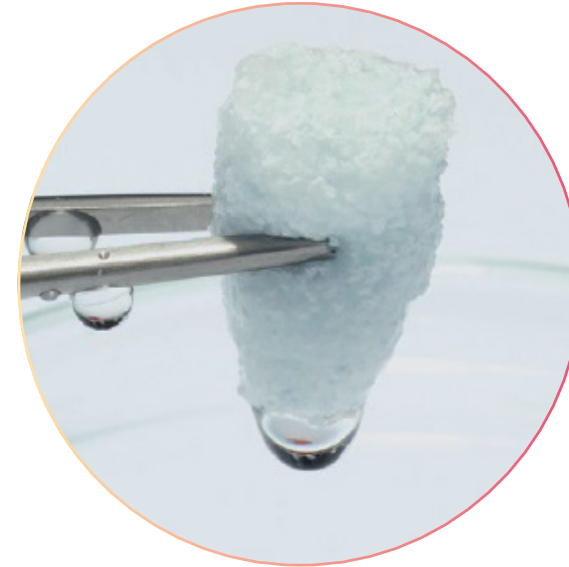
- Natural, dense, open porous collagen structure
- Natural rough surface for cell adhesion/migration
- Open pores facilitates blood vessel ingrowth and support angiogenesis
- Controlled resorption
- Natural collagen supports blot clot formation and wound healing
- Easy application

Resorbable Collagen Membrane



Description	Product Code
15*20 mm - Bovine Collagen Type 1	100382
20*30 mm - Bovine Collagen Type 1	100383
30*40 mm - Bovine Collagen Type 1	100384





BIOCOMPOSITE COLLAGEN PUTTY

KOWSAR Biocomposite Collagen Putty is a biphasic calcium phosphate structure similar to natural bone combined with type I collagen derived from bovine dermis. The mineral particles are dispersed within collagen fibers forming a 3-dimensional matrix. It is supplied dry and forms a moldable putty upon hydration. It is fully resorbed during the natural process of bone formation and remodeling.

While the collagenous phase provides biological signals that promote wound healing within the socket, the biphasic calcium phosphate component ensures volume stability and complete resorption at a controlled rate.

Properties:

- Volume keeping; maintains space and avoids soft tissue collapse
- Easy handling; may be applied straight into the socket using a pair of tweezers
- Maintains integrity in the presence of blood /saline solution, and during application
- Complete resorption at a controlled rate due to synthetic calcium phosphate granules
- Natural, dense, open porous collagen structure
- Natural surface for cell adhesion/migration
- Open pores facilitates blood vessel ingrowth and support angiogenesis
- Natural collagen supports blot clot formation and wound healing

Biocomposite Collagen putty



Description	Product Code
10*10*5 mm	100377
30*28*5 mm	100378
9*8 mm - 0.5 cc	100379
11*10.5 - 1 cc	100380
11*21 mm - 2 cc	100381

Kowsar

Danesh Salamat Kowsar Co.

شرکت موقوفه دانش سلامت کوثر



www.kowsarmedical.com

071-37731153
021-88533650

info@kowsarmedical.com
kowsarmedical@gmail.com

Search & Follow us:



/kowsarmedical

+98 901 871 4737

Branch 1: Corner Of Maharat St., After The Sixth Sq., Shiraz Industrial Town, SHIRAZ, Iran

Branch 308 :2 St., North Pazhoesh St., Shiraz Industrial Town, SHIRAZ, Iran

Tehran branch: unit 10, floor 4, no 3, Farhad Alley, Niloufar St, North Sohrvardi , TEHRAN, Iran